

February 2016 A Frame
5351 Chestnut Street
New Orleans, LA 70115

Bill Pfaff
306 Brooklyn Avenue
Jefferson LA 70121-2835

1214
15 FEB 15
LA 700
NEW ORLEANS

**Officers of New Orleans A's Chapter
Model A Ford Club of America**

President: Ken Falanga
1st Vice President: Phil Strevinsky
2nd Vice President: Ray Schaub
Secretary: Noel Schoenfeld
Treasurer: Hall Townsend
Sergeant-at-Arms: Caroline Schaub
Sunshine Lady: Toni Schaub
Directors: Carl Hunter, Marie Nicolich, Bob Maureau
Newsletter: Mickey King



COMING EVENTS

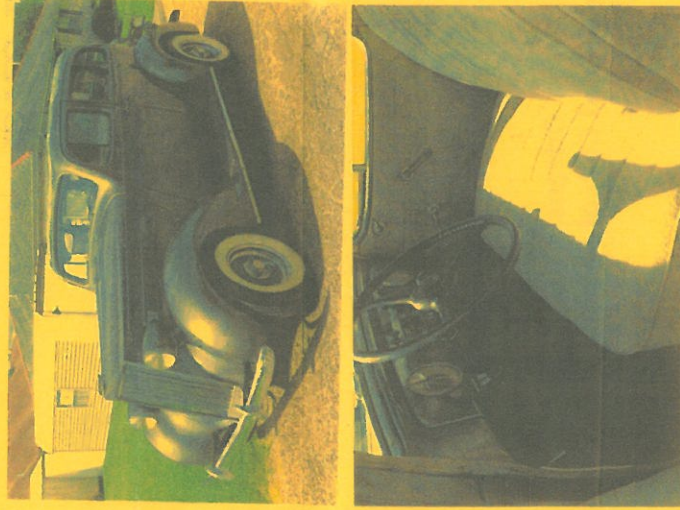
Monthly Meeting: Fourth Wednesday, February 24th. Meet us at Randazzo's at 6:30 pm for dinner. Meeting at 7:30.

February 21: River Shack Photo shoot 0830! Breakfast at Plckadilly Cafeteria.

March 12: Spring Fiesta Parade. More information before parade day.

April 17th: All Clubs Picnic.

TBA: Great Gatsby Party on Brooklyn Avenue; Fun-khana (a "fun" gymkhana) held at Lakefront Airport.



1937 PACKARD RUNS GOOD

504-232-3267 JOE

FOR SALE \$10,800

MODEL A ENGINE NUMBERS

The engine number is stamped on the left side of the cylinder block just above the cylinder inlet connection. The engine number is also the serial number of the car.

Ford did in fact specify the engine number to be the 'serial number' of the vehicle, during the Model A era, and throughout the 1930s. The *Specifications and License Data* page in the Instruction Book is quite clear and specific about this.

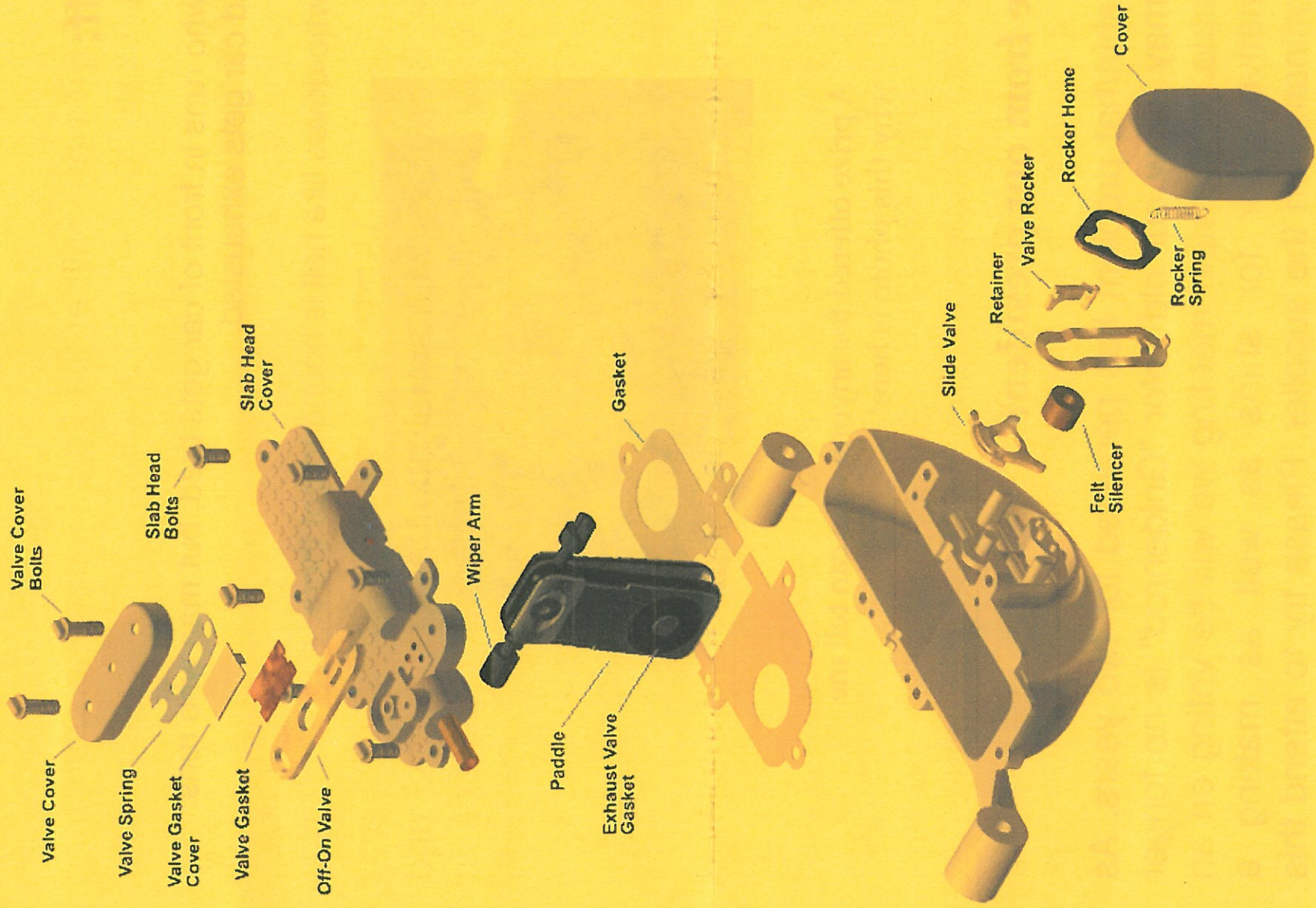
The engine serial number is separate from the alpha prefix letter(s). The numeric serial number is unique and is not directly correlated to the prefix letter(s). The prefix is preceded by a ☆ character, and the numeric serial number is followed by a ☆ character, as shown in the pic above. (photo not here!)

Most Model A Ford engines with serial number prefixes A, AA / AF, and AAF, and Model B Ford engines with serial number prefixes AB, AAB,

B, and BB were built at the Ford Rouge manufacturing complex in Dearborn, Michigan.

Model A engines with serial number prefix CA, CAA, CAW, CAAW, CAE, CAAE, CAR, CAAR, CAT, CAAT, CAY, CAAY, CAU, CAAU, CAI, CAAI, CAO, CAAO, CAP, CAAP, CAS, CAAS, CAD, and CAAD, and Model B engines with serial number prefix CBG and CBQ were built and stamped at Ford of Canada in East Windsor (Ford City), Ontario. Ford Canada used serial number series of their own creation and control.

The engine number was assigned to completed engines after they had passed the electric motor-driven engine run-in (run-off) tests and were released for vehicle final assembly. The engine number then became the serial number for the completed vehicle after final (vehicle) assembly. At the time of vehicle final assembly, the pre-existing engine number was also usually stamped on the vehicle frame in one or more locations (top of LH frame rail near the Number One body bolt).



Stuff:

Man who runs in front of car gets tired, but man who runs behind car gets exhausted.

Man who drives like hell is bound to get there.



A prize offered for anyone who can tell me why this photo is here!

Note from our president:

The shirt/hat problem has persisted for two years. As you may know our old color "Goldenrod" is no longer available. At the next meeting we will be voting on an alternative color for shirts as well as making a determination on the supplier. Please try to attend this meeting to cast your vote. Ken